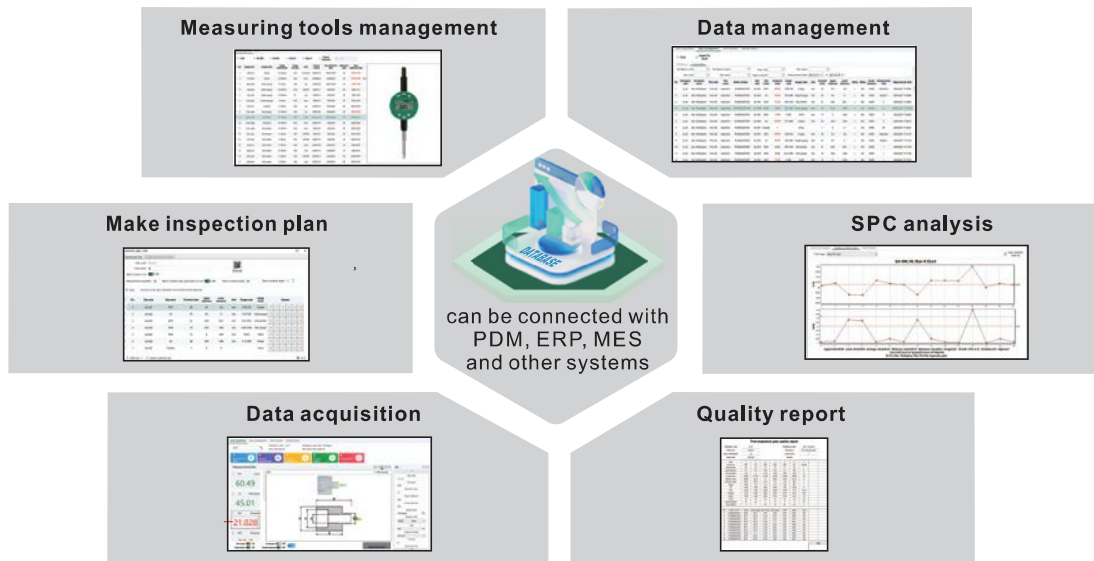


# MEASUREMENT DATA MANAGEMENT AND ANALYSIS SOFTWARE(BASIC TYPE) CODE 7349



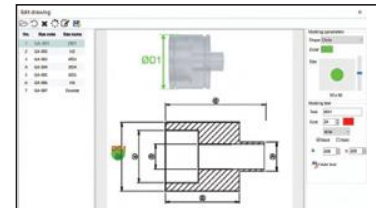
## Measuring tools management

- Information, pictures and calibration date of measuring tools, can import and export Excel



## Make inspection plan

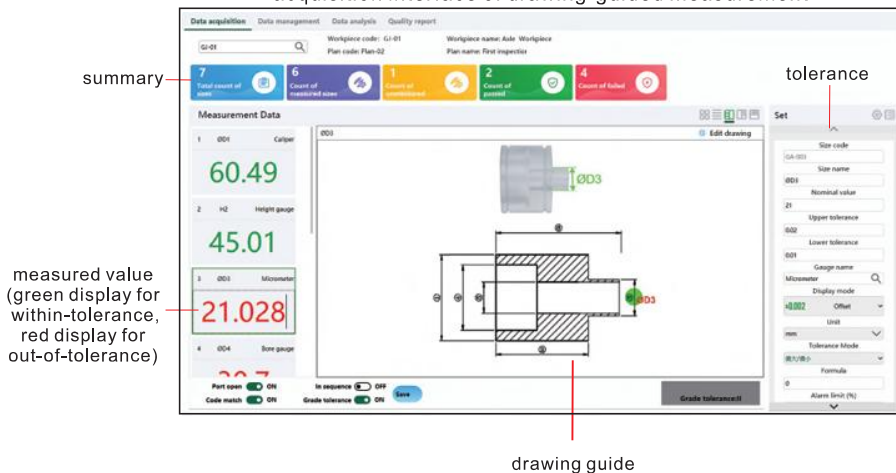
- Define the dimensions, tolerances, measuring tools, drawing guides and formulas of workpieces, can import and export Excel
- Define parameters, QR code and batches of control plans



## Data acquisition

- Drawing-guided measurement, and acquisition data of measuring tools
- Support multiple data acquisition methods  
manual input: data input with keyboard  
data transfer: data collection with data output cable
- Support a variety of visual displays such as meters, trend graphs, levels, temperatures and deviations

acquisition interface of drawing-guided measurement



acquisition interface of multi-dimension visual



## Data management

- Query measurement data (red display for out-of-tolerance) and result status (OK/NG, Rework, UpMax/LowMin), can export Excel

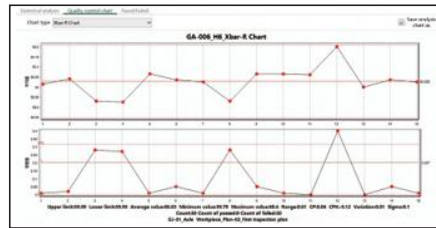
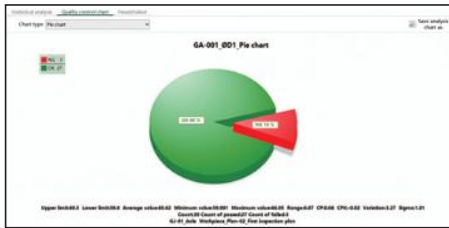
No.	Workpiece code	Workpiece name	Plan code	Plan name	Batch number	Size code	Size name	Measured value	Gauge code	Gauge name	Unit	Nominal value	Upper tolerance	Lower tolerance	Status	Offset	Grade	Measurement date
1	GA-01	Ade Workpiece	Plan-02	Inspection	PH20250227001	GA-001	OD1	60.00	110-100	Caliper	mm	60	0.1	-0.2	> NG	6.00	Detective	2025/02/27 09:20:09
2	GA-02	Ade Workpiece	Plan-02	Inspection	PH20250227002	GA-002	H2	45.33	110-300	Height gauge	mm	45	0.1	0	> NG	5.00	Grade 3	2025/02/27 09:20:09
3	GA-03	Ade Workpiece	Plan-02	Inspection	PH20250227003	GA-003	OD3	21.00	100-254	Micrometer	mm	21	0.02	0.01	> NG	5.00	0	2025/02/27 09:20:09
4	GA-04	Ade Workpiece	Plan-02	Inspection	PH20250227004	GA-004	OD4	30.02	122-100	Bore gauge	mm	30	0.05	-0.02	< OK	5.00	0	2025/02/27 09:20:09
5	GA-05	Ade Workpiece	Plan-02	Inspection	PH20250227005	GA-005	OD5	15.00	CMR	CMR	mm	15	0	-0.05	> NG	5.00	0	2025/02/27 09:20:09
6	GA-06	Ade Workpiece	Plan-02	Inspection	PH20250227006	GA-006	H6	80.00	110-200	Caliper	mm	80	-0.01	-0.05	> NG	5.00	0	2025/02/27 09:20:09
7	GA-07	Ade Workpiece	Plan-02	Inspection	PH20250227007	GA-007	Outside	1		Visual		1	0	0	< OK	5.00	0	2025/02/27 09:20:09
8	GA-08	Ade Workpiece	Plan-02	Inspection	PH20250227008	GA-001	OD1	60.00	110-100	Caliper	mm	60	0.1	-0.2	> NG	5.00	Detective	2025/02/27 09:15:53
9	GA-09	Ade Workpiece	Plan-02	Inspection	PH20250227009	GA-002	H2	45.32	110-300	Height gauge	mm	45	0.1	0	> NG	5.00	Grade 3	2025/02/27 09:15:54
10	GA-10	Ade Workpiece	Plan-02	Inspection	PH20250227010	GA-003	OD3	21.02	100-254	Micrometer	mm	21	0.02	0.01	< OK	5.00	0	2025/02/27 09:15:54
11	GA-11	Ade Workpiece	Plan-02	Inspection	PH20250227011	GA-004	OD4	30.02	122-100	Bore gauge	mm	30	0.05	-0.02	< OK	5.00	0	2025/02/27 09:15:54
12	GA-12	Ade Workpiece	Plan-02	Inspection	PH20250227012	GA-005	OD5	15.00	CMR	CMR	mm	15	0	-0.05	> NG	5.00	0	2025/02/27 09:15:54

## SPC analysis

- Parameters of SPC analysis: average, min value, max value, range, Cp, Cpk, variation, sigma, counts of OK/NG, can export Excel

No.	Workpiece code	Workpiece name	Nominal value	Upper limit	Lower limit	Average value	Minimum value	Maximum value	Range	CP	Cpk	Variation	Sigma	Count	Count of passed	Count of failed
1	GA-001	OD1	60	60.1	59.8	60.625	59.981	66.05	6.069	0.064	-0.023	2.273	1.879	30	27	3
2	GA-002	H2	45	45.1	44.9	45.146	44.81	45.56	1.550	0.282	0.165	0.887	0.296	30	23	7
3	GA-003	OD3	21	21.02	21.01	21.048	21	21.11	0.110	0.047	-0.285	0.091	0.035	30	6	24
4	GA-004	OD4	30	30.05	29.98	30.084	29.95	30.7	0.750	0.096	-0.054	0.031	0.176	30	15	15
5	GA-005	OD5	15	15	14.95	15.058	14.96	15.6	0.640	0.060	-0.186	0.011	0.105	30	4	26
6	GA-006	H6	80	80.09	80.05	80.028	79.79	80.4	0.610	0.064	-0.130	0.011	0.105	30	0	30
7	GA-007	Outside	1	1	1	0.900	0	1.080	0.080	-0.111	0.090	0.300	0	30	27	3

- Provide variety of quality analysis control charts: Pie Chart, X Chart, Xbar-R Chart, Xbar-S Chart, I-MR Chart and Run Chart, can export JPEG image



## Quality report

- Generate quality reports with control plan information, SPC parameters, and measurement data, can export Excel

First inspection plan quality report																
Workpiece code	GA-01			Workpiece name	Ade Workpiece											
Plan code	Plan-02			Plan name	First inspection plan											
Count of Workpiece	30			Count of size	7											
Export date	2025/2/28			Remark												
Item	1	2	3	4	5	6	7									
Size name	OD1	H2	OD3	OD4	OD5	H6	Outside									
Nominal value	60	45	21	30	15	80	1									
Upper tolerance	0.5	0.5	0.02	0.05	0.2	0.01	0									
Lower tolerance	-0.2	0	0.01	-0.02	-0.05	-0.05	0									
Average value	60.625	45.146	21.048	30.084	15.058	80.028	0.9									
Minimum value	59.981	44.81	21	29.95	14.96	79.79	0									
Maximum value	66.05	45.56	21.11	30.7	15.6	80.4	1									
Range	6.069	1.55	0.11	0.75	0.64	0.61	1									
CP	0.064	0.282	0.047	0.096	0.09	0.064	0									
Cpk	-0.023	0.165	-0.285	-0.068	-0.186	-0.12	-0.111									
Variation	2.273	0.887	0.091	0.031	0.011	0.011	0.09									
Sigma	1.869	0.296	0.035	0.176	0.165	0.105	0.3									
Count	30	30	30	30	30	30	30									
Count of passed	27	23	6	15	4	0	27									
Count of failed	3	7	24	15	26	30	3									
No.	Batch number	Caliper	Height gauge	Micrometer	Bore gauge	CMR	Caliper	Visual								
1	PH20250227001	59.98	45.01	21.01	30.00	15.04	60.01	1.00								
2	PH20250227002	60.01	45.06	21.02	30.01	15.05	59.99	1.00								
3	PH20250227003	60.01	45.07	21.01	30.01	15.06	60.01	1.00								
4	PH20250227004	59.99	45.08	21.02	29.95	15.07	60.01	0.00								
5	PH20250227005	60.01	45.09	21.02	30.04	15.08	59.99	1.00								
6	PH20250227006	60.01	45.10	21.02	30.04	15.09	59.99	1.00								
7	PH20250227007	60.00	45.02	21.02	29.99	14.96	59.98	1.00								
8	PH20250227008	59.98	44.93	21.02	30.05	15.02	59.99	1.00								
9	PH20250227009	59.99	45.04	21.02	30.04	15.03	59.98	1.00								
10	PH20250227010	60.01	45.05	21.02	30.05	15.04	60.01	1.00								
Sign																